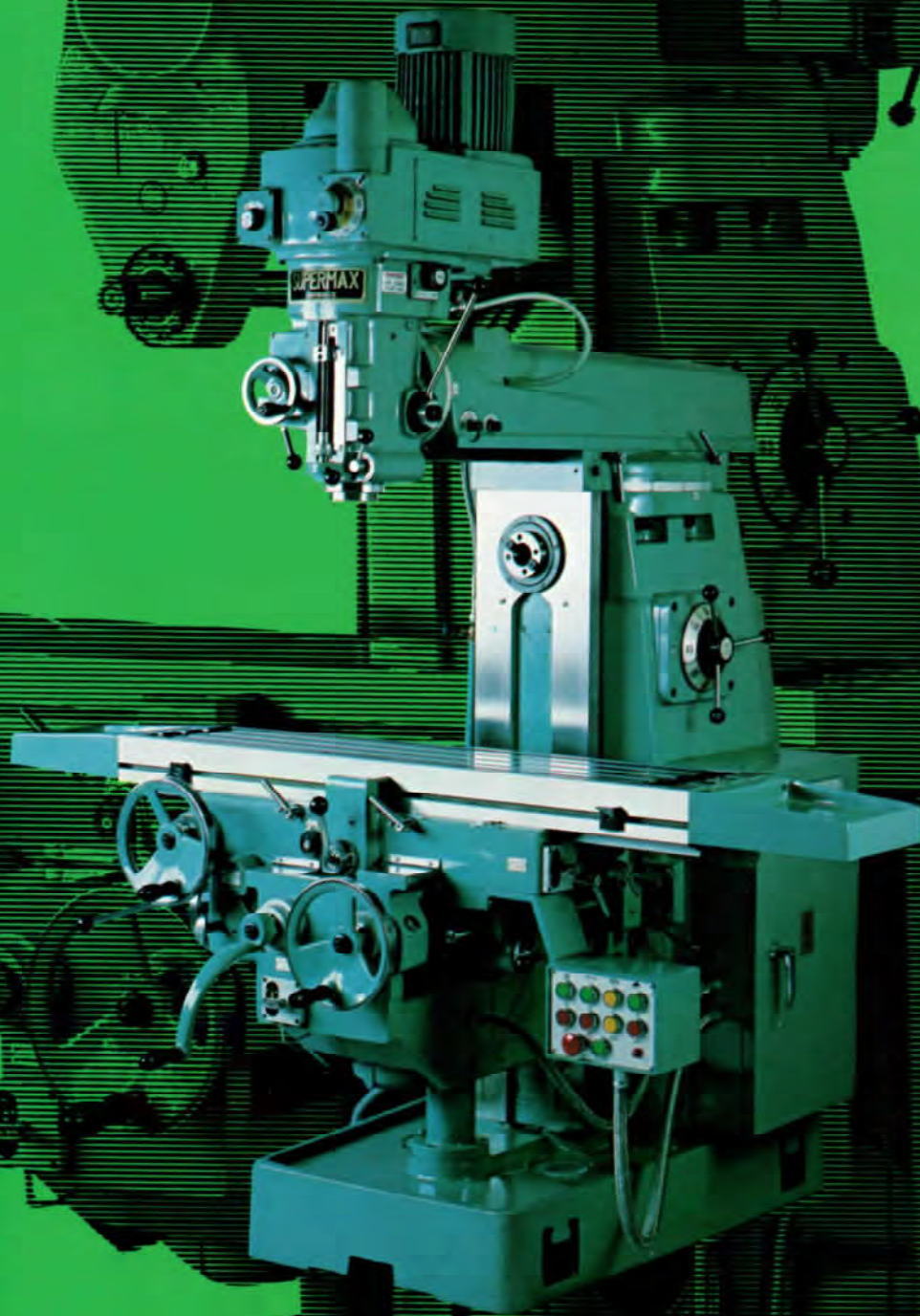


SUPERMAX



VERTICAL TURRET MILLING MACHINE

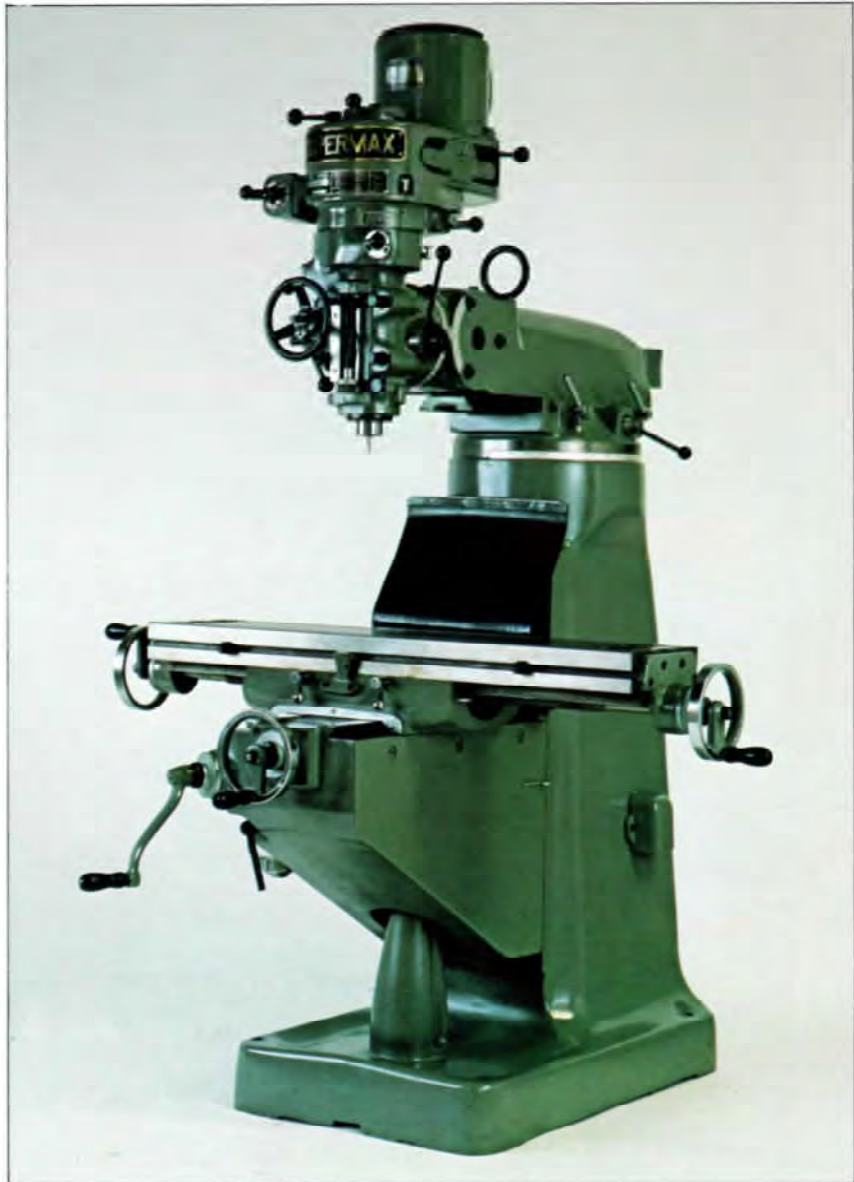
YC-1½VA

SUPERMAX

Outstanding Simplicity

The basic tool in our line of fine equipment, the YC-1½VA combines proven reliability with simplicity of design. From prototype to production milling, the 1½VA will deliver years of peerless performance. It's a miller that's at home in any shop situation.

High quality components and a commitment to manufacturing excellence have earned the 1½VA an outstanding reputation in thousands of shops around the country.



SPECIFICATIONS

TABLE	in inches	DRIVE MOTORS	
WORKING SURFACE	42 x 9	VERTICAL SPINDLE	2 H.P.
WORKING SURFACE/OPTIONAL	49 x 9	DIMENSIONS & WEIGHT	
LONGITUDINAL TRAVEL	30 (34)	DEPTH X WIDTH X HEIGHT	63 x 87 (94) x 81
CROSS TRAVEL	12	NET WEIGHT: lbs.	2200
VERTICAL TRAVEL	16	STANDARD ACCESSORIES	
T-SLOTS (NUMBER X WIDTH)	3 x 5/8	DRAW BAR	
SPINDLE		ONE SHOT LUBE PUMP	
SPEEDS (8): R.P.M.	80 — 2720	SERVICE WRENCHES	
SPINDLE TAPER	R-8	OPERATION/MAINTENANCE MANUAL	
QUILL TRAVEL	5	OPTIONAL ACCESSORIES	
POWER QUILL (3 SPEEDS)		TABLE POWER FEED	
SPINDLE NOSE TO TABLE SURFACE	18 3/8	RIGHT ANGLE MILLING HEAD	
COLLECT CAPACITY	1/16 — 7/8	RIGHT ANGLE ARBOR & SUPPORT	
RAM TRAVEL	12	#200 UNIVERSAL SPINDLE	

VERTICAL TURRET MILLING MACHINE

YC-1½VS

SUPERMAX

Infinite Variety

Truly the most versatile turret-type milling machine, the YC-1½VS has all the outstanding features of the YC-1½VA with one very important addition — a newly designed (U.S. Pat. Pend.) head with infinitely-variable speed.

Among the many improvements in design is a unique approach to head and spindle cooling. The reliability and accuracy of this fine machine is sure to make it the pride of any shop.



SPECIFICATIONS

TABLE	In Inches	DRIVE MOTORS	
WORKING SURFACE	42 x 9	VERTICAL SPINDLE	2 or 3 H.P.
WORKING SURFACE/OPTIONAL	49 x 9	DIMENSIONS & WEIGHT	
LONGITUDINAL TRAVEL	30 (34)	DEPTH X WIDTH X HEIGHT	63 x 87 (94) x 81
CROSS TRAVEL	12	NET WEIGHT: lbs.	2200
VERTICAL TRAVEL	16	STANDARD ACCESSORIES	
T-SLOTS (NUMBER X WIDTH)	3 x 5/8	DRAW BAR	
SPINDLE		ONE SHOT LUBE PUMP	
SPEEDS (INFINITY VARIABLE): R.P.M.	60—4200	SERVICE WRENCHES	
SPINDLE TAPER	R-8	OPERATION / MAINTENANCE MANUAL	
QUILL TRAVEL	5	OPTIONAL ACCESSORIES	
POWER QUILL (3 SPEEDS)		TABLE POWER SPEED	
SPINDLE NOSE TO TABLE SURFACE	18 3/8	RIGHT ANGLE MILLING HEAD	
COLLECT CAPACITY	1/16 — 7/8	RIGHT ANGLE ARBOR & SUPPORT	
RAM TRAVEL	12	#200 UNIVERSAL SPINDLE	

HEAVY-DUTY VERTICAL MILLING MACHINE YC-2VAS

SUPERMAX

Heavy Capabilities

The model 2VAS is designed for those who need heavy milling capabilities in a vertical turret mill. The large (4 3/8" diameter) quill is ground to maintain accuracy over a long life.

A 5 HP infinitely variable spindle motor provides ample power to take advantage of the large quill and heavy head design. The oil-cooled spindle assures quiet, reliable operation in the heaviest possible milling. All ways are hardened and ground for durability and precision. Backlash compensation is standard.



SPECIFICATIONS

TABLE	In inches
WORKING SURFACE	52 x 11
LONGITUDINAL TRAVEL	40
CROSS TRAVEL	
AUTO	11 1/2
MANUAL	12 1/2
VERTICAL TRAVEL	18
T-SLOTS (NUMBER X WIDTH)	3 x 5/8
LONGITUDINAL & CROSS FEED RANGE	1/2 — 27 1/2
LONGITUDINAL & CROSS RAPID TRAVEL	118
VERTICAL FEED & RAPID (1/3 OF LONGITUDINAL RATE)	
SPINDLE	
SPEEDS (INFINITELY VARIABLE): R.P.M.	75 — 4220
SPINDLE TAPER	#40 NST
QUILL TRAVEL	5 1/2
QUILL DIAMETER	4 3/8
SPINDLE NOISE TO TABLE SURFACE	0 — 22 1/2

DRIVE MOTORS	
SPINDLE	5 H.P.
TABLE FEED (DC)	2 H.P.
KNEE FEED (DC)	1 H.P.
COOLANT PUMP	1/10 H.P.
DIMENSIONS & WEIGHT	
DEPTH X WIDTH X HEIGHT	70 x 75 x 90
NET WEIGHT: lbs.	4650
STANDARD ACCESSORIES	
FLOOD COOLANT	
BACKLASH COMPENSATION	
TOOL BOX	
SERVICE WRENCHES	
ONE SHOT LUBE PUMP	
OPERATION/MAINTENANCE MANUAL	
OPTIONAL ACCESSORIES	
UNIVERSAL TABLE (± 45° SWIVEL)	

HEAVY-DUTY VERTICAL / HORIZONTAL MILLING MACHINE

YC-2GS

SUPERMAX

Combination Milling

The YC-2GS is a true combination vertical/horizontal miller, with the ruggedness and versatility to make the heaviest cuts in either vertical or horizontal mode.

The use of 5 HP motors on both spindles guarantees plenty of power for the most demanding applications. Rigid castings, hardened and ground ways, and precision bearings throughout ensure accuracy over a long life.

Conversion between horizontal and vertical operations can easily be done by one man in just a few minutes. Backlash compensation for climb milling is standard.



SPECIFICATIONS

TABLE	in inches	DRIVE MOTORS	
WORKING SURFACE	52 x 11	VERTICAL SPINDLE	5 H.P.
LONGITUDINAL TRAVEL	40	HORIZONTAL SPINDLE	5 H.P.
CROSS TRAVEL AUTO	11½	TABLE FEED (DC)	2 H.P.
MANUAL	12½	KNEE FEED (DC)	1 H.P.
VERTICAL TRAVEL	18	COOLANT PUMP	1/10 H.P.
T-SLOTS (NUMBER X WIDTH)	3 x 5/8	DIMENSIONS & WEIGHT	
LONGITUDINAL & CROSS FEED RANGE	½—27½	DEPTH X WIDTH X HEIGHT	70 x 75 x 90
LONGITUDINAL & CROSS RAPID TRAVEL	118	NET WEIGHT: lbs.	5700
VERTICAL FEED & RAPID (½ OF LONGITUDINAL RATE)		STANDARD ACCESSORIES	
VERTICAL SPINDLE		BACKLASH COMPENSATION	
SPEEDS (INFINITELY VARIABLE) : R.P.M.	75 — 4220	FLOOD COOLANT	
SPINDLE TAPER	#40 NST	HORIZONTAL ARBOR	
QUILL TRAVEL	5½	2 ARBOR SUPPORTS	
QUILL DIAMETER	4 3/8	TOOL BOX	
SPINDLE NOSE TO TABLE SURFACE	0—22½	SERVICE WRENCHES	
HORIZONTAL SPINDLE		ONE SHOT LUBE	
SPEEDS (9): R.P.M.	85 — 1300	OPERATION / MAINTENANCE MANUAL	
SPINDLE TAPER	#40 NST	OPTIONAL ACCESSORIES	
CLEARANCE OF SPINDLE TO OVERARM	6½	UNIVERSAL TABLE (± 45° SWIVEL)	
MAXIMUM DISTANCE SPINDLE TO TABLE	19		

HORIZONTAL MILLING MACHINE YC-2H

SUPERMAX

The size is right

A rugged horizontal milling machine, the YC-2H meets the demands of those who require efficient size combined with easy operation.

The extensive use of internal ribbing ensures a rigid frame, capable of taking heavy cuts without vibration or chattering. The spindle is supported by precision bearings at three points. Ways are hardened and ground for long life and absolute accuracy, and backlash compensation for climb milling is standard. The optional vertical milling head incorporates a radial support arm, enabling easy conversion from horizontal to vertical milling.



SPECIFICATIONS

TABLE	in inches		
WORKING SURFACE	52 x 11		
LONGITUDINAL TRAVEL	40		
VERTICAL TRAVEL	19		
CROSS TRAVEL	AUTO	11½	
	MANUAL	12½	
T-SLOTS (NUMBER X WIDTH)	3 x 5/8		
LONGITUDINAL CROSS FEED RANGE	½ — 27½		
LONGITUDINAL & CROSS RAPID TRAVEL	118		
VERTICAL FEED & RAPID (½ OF LONGITUDINAL RATE)			
SPINDLE			
SPEEDS (9): R.P.M.	85 — 1300		
SPINDLE TAPER	#40 NST		
CLEARANCE OF SPINDLE TO OVERARM	4 9/10		
MAXIMUM DISTANCE SPINDLE TO TABLE	19		
DRIVE MOTORS			
SPINDLE	5 H.P.		
		TABLE FEED (DC)	2 H.P.
		KNEE FEED (DC)	1 HP
		COOLANT PUMP	1/10 H.P.
		DIMENSIONS & WEIGHT	
		DEPTH X WIDTH X HEIGHT	65 x 75 x 65
		NET WEIGHT: lbs.	4700
		STANDARD ACCESSORIES	
		HORIZONTAL ARBOR	
		2 ARBOR SUPPORTS	
		BACKLASH COMPENSATION	
		FLOOD COOLANT	
		TOOL BOX	
		SERVICE WRENCHES	
		ONE SHOT LUBE PUMP	
		OPERATION / MAINTENANCE MANUAL	
		OPTIONAL ACCESSORIES	
		VERTICAL MILLING HEAD	#50 NST
		UNIVERSAL TABLE (± 45° SWIVEL)	

HEAVY-DUTY HORIZONTAL MILLING MACHINE

YC-3H

SUPERMAX

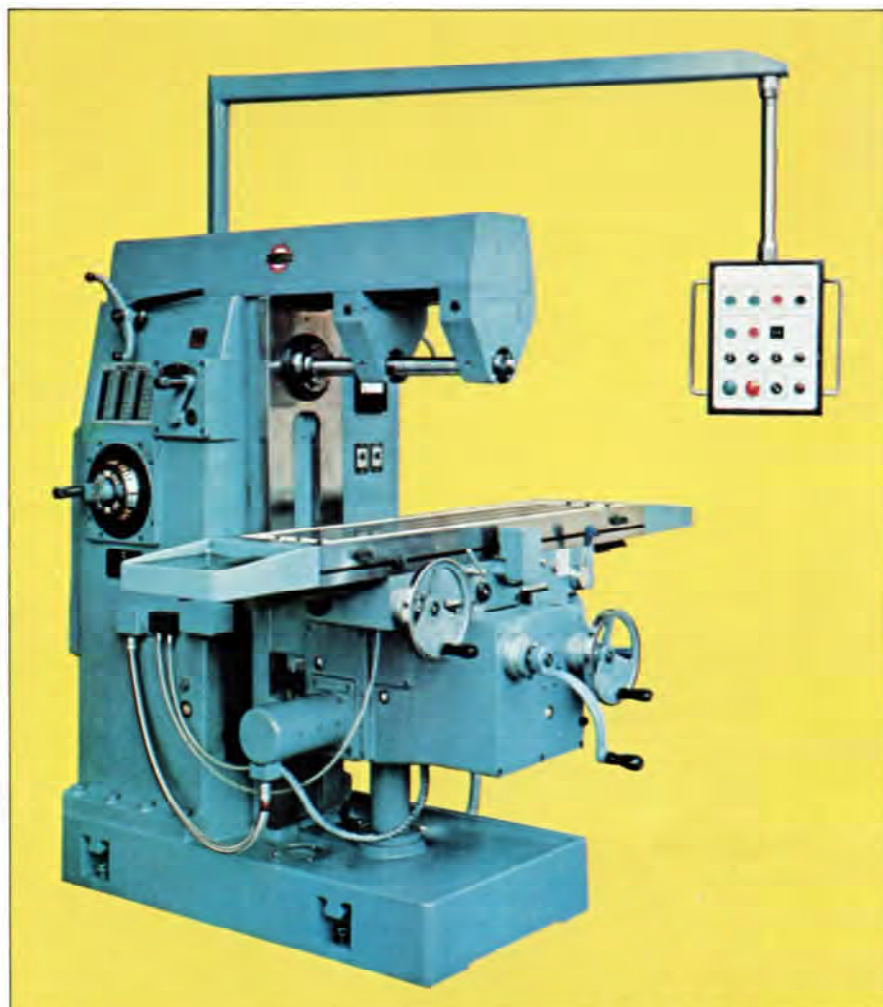
Our Heaviest Manual Machine

This size 3 machine is the top of the line in manual milling machines, built for those who need very heavy milling capacity with no sacrifice in accuracy.

A rigid frame and extra-wide ways ensure stability under the heaviest cutting forces. Backlash compensation is standard on both cross and longitudinal lead screws. The wide, square ways are hardened and ground.

At home in any shop environment, the YC-3H offers simplicity of design with long-range reliability.

NOTE: YCI also builds a vertical mill in size 3. All specifications are the same as the size 3H. Check with YCI or your dealer for details.



SPECIFICATIONS

TABLE	In inches
WORKING SURFACE	53 x 12
LONGITUDINAL TRAVEL	42
VERTICAL TRAVEL	19
CROSS TRAVEL	12
T-SLOTS (NUMBER X WIDTH)	3 x 5/8
LONGITUDINAL & CROSS FEED RANGE	3/4 — 34 1/2
LONGITUDINAL & CROSS RAPID TRAVEL	60
VERTICAL RAPID FEED (1/2 OF LONGITUDINAL RATE)	
SPINDLE	
SPEEDS (12): R.P.M.	45 — 1345
SPINDLE TAPER	#50 NST
CLEARANCE OF SPINDLE TO OVERARM	6 1/2
MAXIMUM DISTANCE SPINDLE TO TABLE	12 1/2

DRIVE MOTORS	
SPINDLE	7 1/2 H.P.
TABLE FEED (DC)	2 H.P.
KNEE FEED (DC)	1 H.P.
COOLANT PUMP	1/10 H.P.
DIMENSIONS & WEIGHT	
DEPTH X WIDTH X HEIGHT	27 x 96 x 83
NET WEIGHT; lbs.	5750
STANDARD ACCESSORIES	
BACKLASH COMPENSATION	
HORIZONTAL ARBOR	
2 ARBOR SUPPORTS	
FLOOD COOLANT	
ONE SHOT LUBE PUMP	
TOOL BOX	
SERVICE WRENCHES	
OPERATION/MAINTENANCE MANUAL	

YCI — BUILDING THE TOOLS OF EXCELLENCE

YCI's 600,000 square foot manufacturing facilities are situated on fifty acres of land conveniently located near major rail and ship terminals. Over 650 skilled employees using the latest manufacturing techniques and equipment make YCI one of the largest machine tool builders in the world.

An ongoing commitment to quality and manufacturing excellence guarantees that every mill YCI builds will deliver years of service in any shop situation.

For all your milling needs, both CNC and conventional, YCI offers the experience of a recognized leader in the machine tool industry, experience that has earned YCI its reputation as **THE MILLING MACHINE SPECIALISTS**.



YOUR LOCAL DEALER IS:

Y.C.I. U.S.A. INC.
1850 KONA DRIVE
COMPTON, CA 90220
(213) 637-6380, TWX 910-346 6382

YCI builds a complete line of CNC machine tools.
Ask your dealer or YCI for details.

www.OzarkToolManuals.com

Features

Precision Bored and Honed Milling Head.

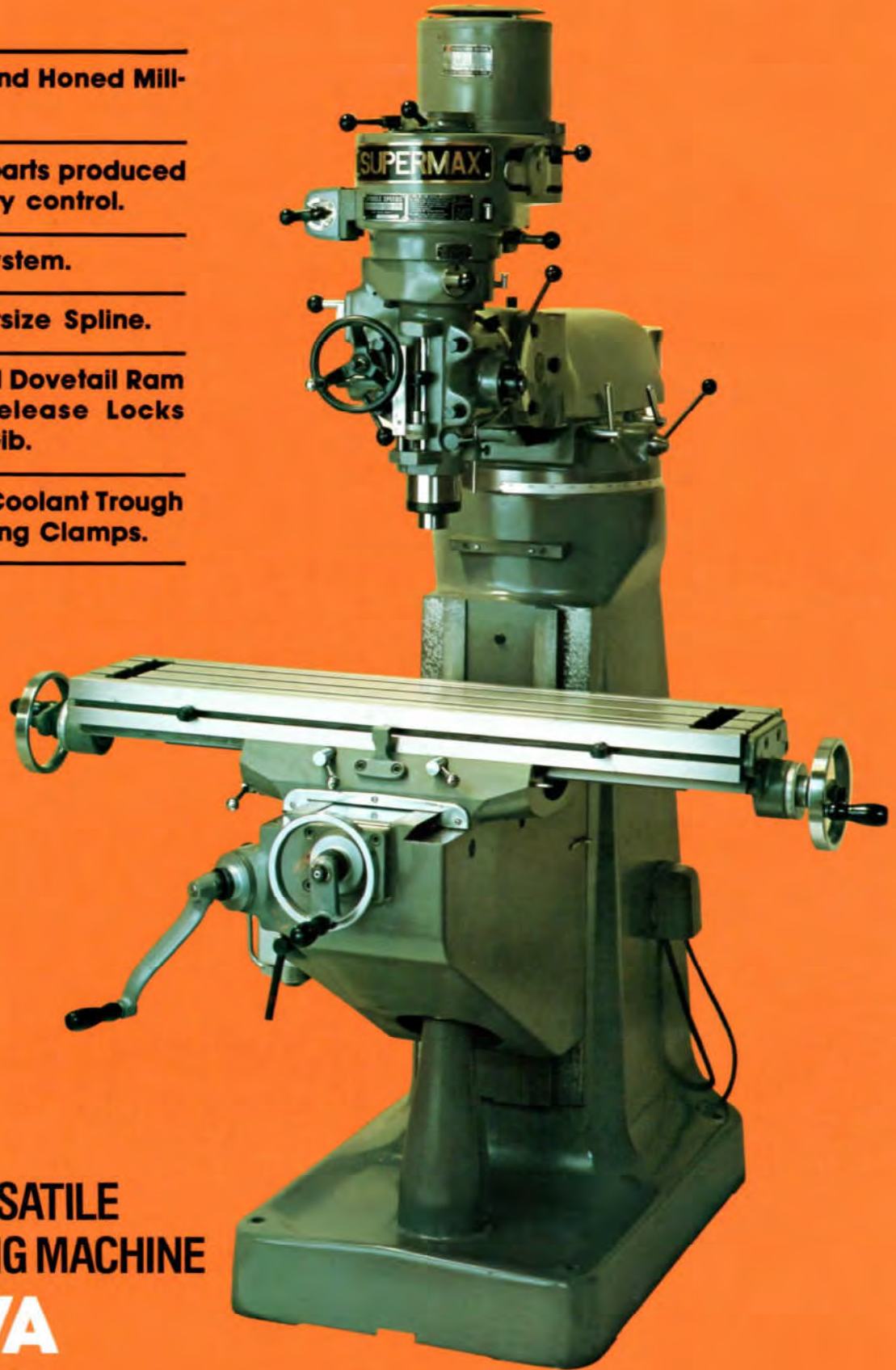
All castings and parts produced under strict quality control.

One-shot oiling system.

Heavy Duty Oversize Spline.

Precision Scraped Dovetail Ram w/Dual Quick Release Locks and Adjustable Gib.

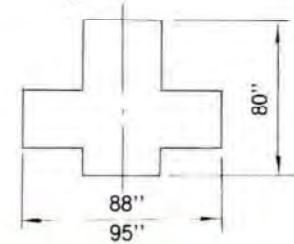
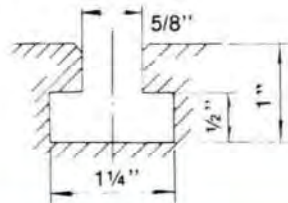
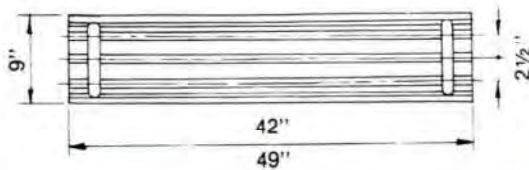
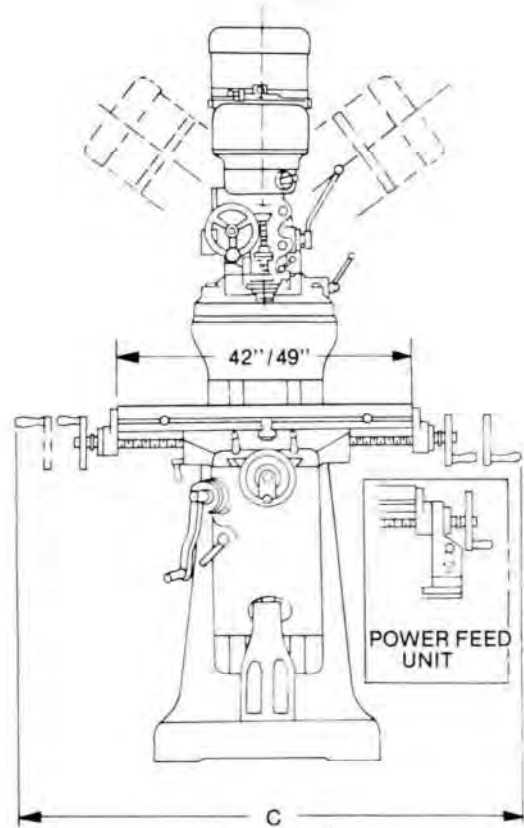
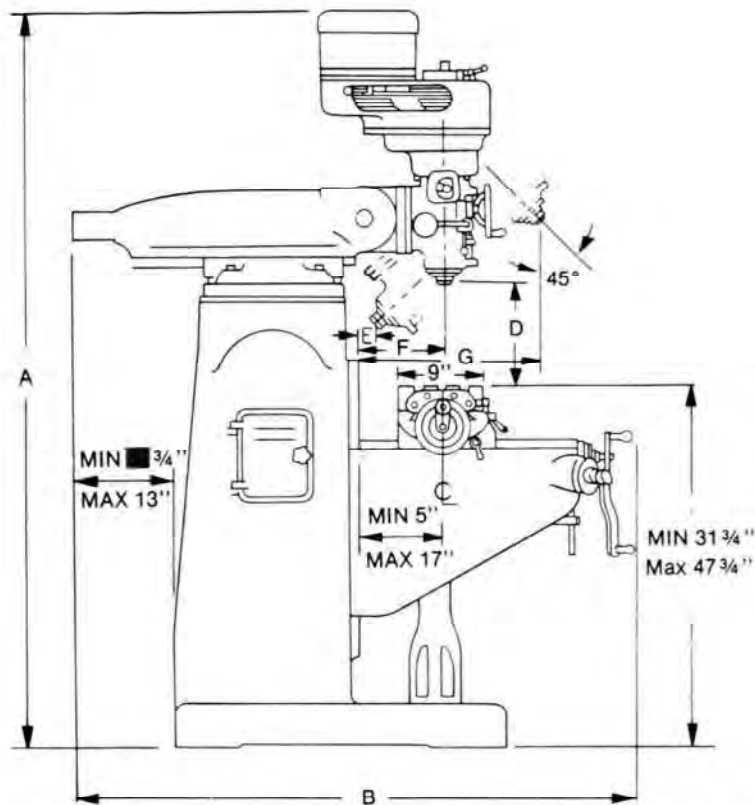
Ground Table w/Coolant Trough and Double Locking Clamps.



THE MOST VERSATILE
TURRET MILLING MACHINE

YC-1½ VA

SUPERMAX™



SPECIFICATIONS

	in inches
WORKING SURFACE OF TABLE	42 x 9 (49 x 9)
LONGITUDINAL TRAVEL	30 (35)
CROSS TRAVEL	12
VERTICAL TRAVEL	16
NUMBER OF TEE SLOTS	3
WIDTH AND CENTERS	5/8 at 2 1/2
RAM MOVEMENT	12
A OVERALL HEIGHT	81

	in inches
B OVERALL DEPTH	63
C OVERALL WIDTH	87 (94)
D TABLE TO SPINDLE NOSE (min. - max.)	0 - 18 3/8
E HEAD 45° INWARD (min. - max.)	0 - 11 1/4
F HEAD 90° INWARD (min. - max.)	6 3/4 - 19
G HEAD 45° OUTWARD (min. - max.)	9 - 12
FLOOR AREA OCCUPIED	80 x 88 (95)
MACHINE NET WEIGHT	2200 lbs.

MODEL YC-1 1/2 VA HEAD

SPINDLE SPEEDS - (8) 80, 135, 210, 325, 660, 1115, 1750, 2720.

POWER FEED PER SPINDLE REVOLUTION - .0017, .0032, .0053

SPINDLE TAPER - R-8 or NST#30

QUILE TRAVEL - 5

COLLET CAPACITY - 1/16 - 7/8

H.P. OF MOTOR - 2 Hp.

- Special Accessories: 1. Coolant System 2. Power Feed (Servo made) 3. Right Angle Milling Attachment 4. Arbor & Arbor Support 5. Variable Speed Attachment 6. Long Table 49 x 9



Y.C.I. U.S.A. INC.

1850 KONA DRIVE, COMPTON,
CALIFORNIA 90220
(213) 637-6380, TWX 910-346 6382

YEONG CHIN MACHINERY INDUSTRIES CO., LTD.,

www.OzarkToolManuals.com

YOUR DEALER

