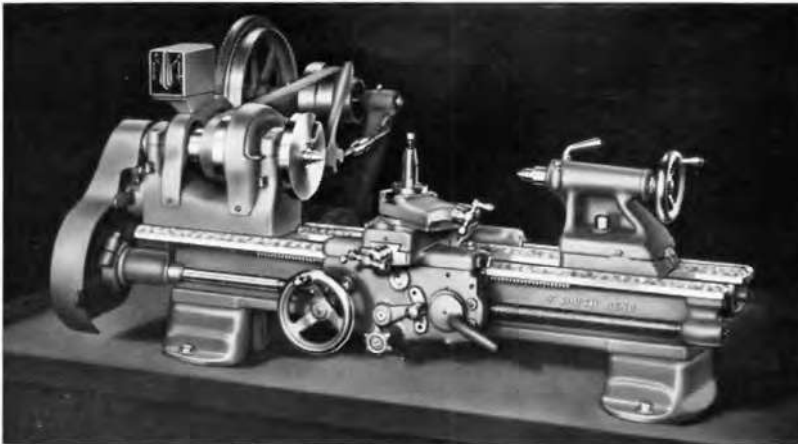
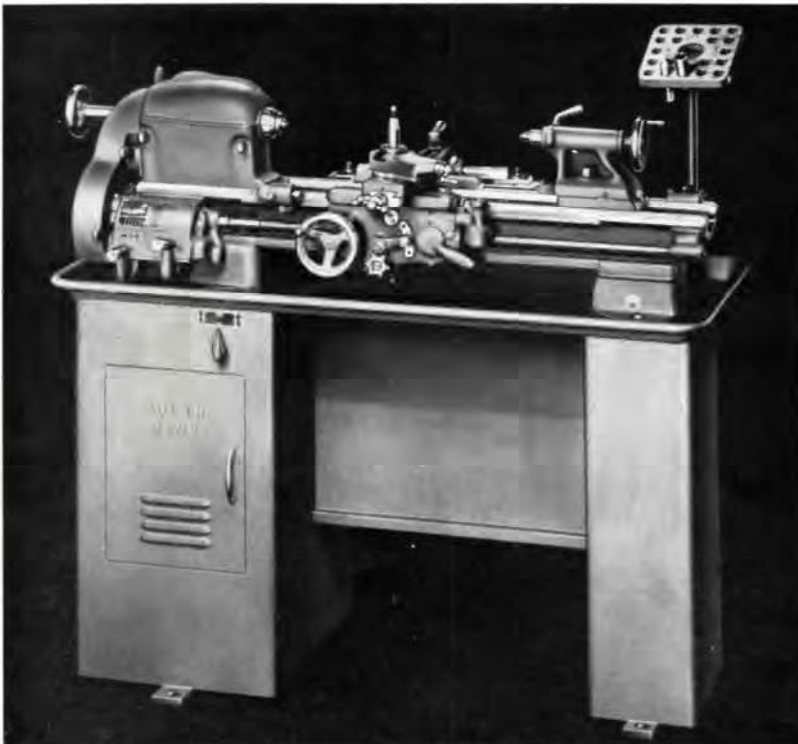


South Bend 9" x 3' Model C Bench Lathe



South Bend 9" x 3' Model B Bench Lathe



South Bend 9" x 3 1/2' Underneath Motor Drive  
Toolroom Lathe

*Precision-Built*

# SOUTH BEND 9" LATHES

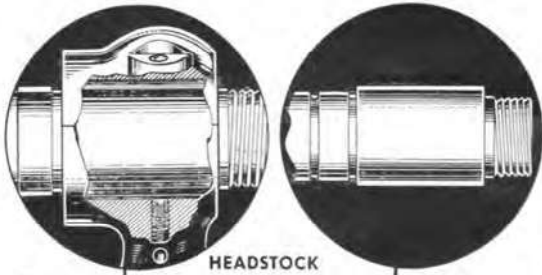
We sincerely believe that South Bend 9" Lathes are superior in quality to any lathe of comparable size available at anywhere near the price. They are precision tools capable of machining work to the exacting tolerances demanded in modern industry. Only the best workmanship and materials are used. The bed is made of a special quality hard, close-grained cast iron. It has three V-ways and one flat-way, accurately hand-scraped their entire length. To assure perfect alignment, the headstock and tailstock are hand-scraped to the inside bed ways. The headstock spindle is made of alloy steel with hardened and superfinished journal bearing surfaces. Headstock bearings for the spindle are precision line bored and have large capillary oilers. The carriage has long hand-scraped bearings for the two outer V-ways of the lathe bed, providing a solid support for the cutting tool and reducing wear to the minimum. Cross slide dovetails are hand-scraped and have adjustable gibs. The tailstock top is off-set and has set over for taper turning. Graduations are provided on the tailstock spindle and the center is self-ejecting. The entire lathe is nicely finished in gray enamel.



**SOUTH BEND LATHE WORKS**

BUILDING BETTER LATHES SINCE 1906 • 425 EAST MADISON STREET, SOUTH BEND 22, INDIANA

# FEATURES of South Bend 9" Precision Lathes



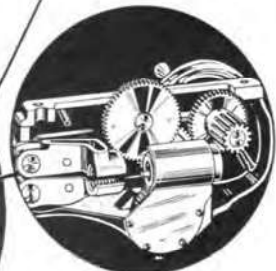
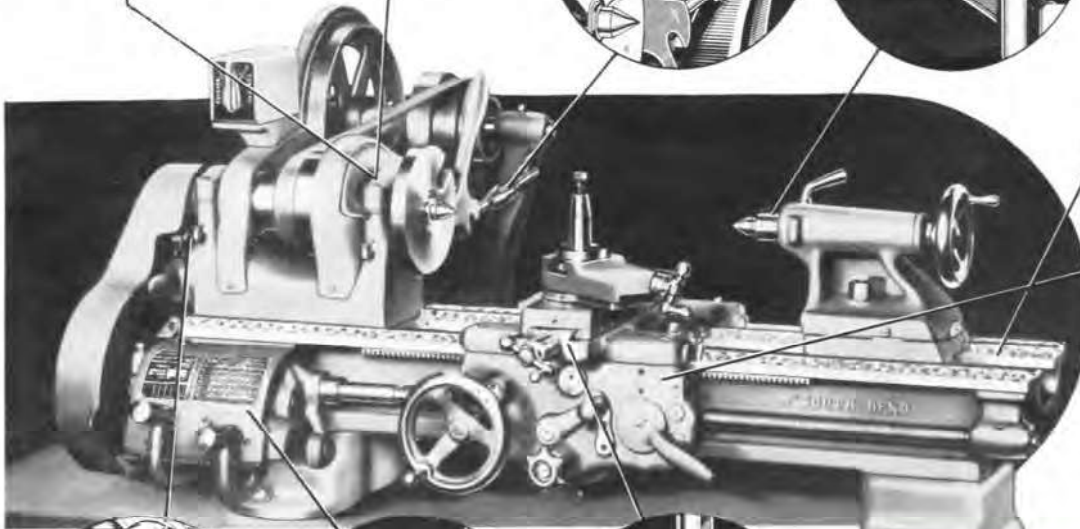
**HEADSTOCK**

Bearings are line bored and bearingized for precision fit. Ample lubrication from oil reservoirs. Spindle is carburized, hardened, and ground; with bearing surfaces super-finished to .000005" rms.

**BELT RELEASE**  
Instant release of belt tension for speed changes. Proper tension of headstock spindle drive belt is easily adjusted.

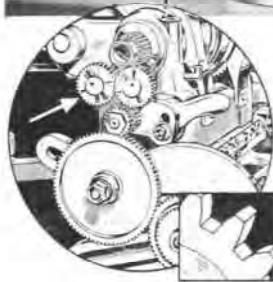
**TAILSTOCK**  
Has set-over for taper turning. Graduated spindle has witness mark for aligning cutter bit. Hardened center self-ejecting.

**BED**  
Three V-ways and one flat-way are hand-scraped entire length for precision alignment of headstock, tailstock, and carriage.



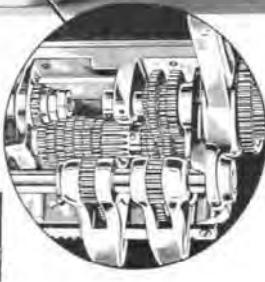
**APRON**

Has powerful friction clutch and large half-nuts. Safety interlock prevents engaging opposing feeds. All gears machine cut.



**REVERSE GEARS**

Easily shifted for reversing lead screw rotation and feeds, positive lock. All the gears used in this lathe are machine cut.



**GEAR BOX**

Screw threads and power feeds selected by shifting two tumblers as indicated on index chart. All gears machine cut steel.



**CARRIAGE**

V-ways and dovetails hand-scraped. Engine divided micrometer collars on feed screws. Compound Rest base graduated 180 degrees.

## Specifications . . .

### South Bend 9" Model A Lathe

- SWING . . . . . over bed — 9-1/4"  
over cross slide — 5"
- BED LENGTHS . . . 3, 3-1/2, 4, and 4-1/2 feet
- DISTANCE BETWEEN CENTERS . . 16" to 34"
- SPINDLE SPEEDS (12) . . . 41 to 1270 r.p.m.
- POWER FEEDS:  
Longitudinal (48) . . . . . .0015" to .0853"  
Cross-feed (48) . . . . . .0004" to .0252"
- THREADS (48 pitches) . . . 4 to 224 per inch
- MAXIMUM COLLET CAPACITY . . . . 1/2 inch
- SPINDLE BORE . . . . . .3/4 inch
- TAILSTOCK TOP SET-OVER . . . . . 5/8 inch

## Chuck and Tool Assortment



2820NK. Chuck and Tool Assortment for 9" lathe, consisting of No. 4006W, 6" 4-Jaw Independent Chuck fitted to lathe; No. 1201, 1 1/2" Jacobs 3-Jaw Drill Chuck with No. 2302 arbor; No. 1413N, 10 in 1 Tool Holder equipped with self-aligning knurling head having medium diamond knurls; No. 2776, set of 4 Ground Cutter Bits, 3/8" square for 10 in 1 Tool Holder; No. 2420NR, Sleeve Boring Bar, 1/2" x 7 5/8" for 10 in 1 Tool Holder; No. 876 Cutting-off Blade for 10 in 1 Tool Holder; and Set of 4 Malleable Lathe Dogs 1/2" to 1 1/2" capacity, No's. 3838, 3839, 3840, and 3842. Shipping weight approximately 28 lbs.



## Model A 9-inch *Precision* Bench Lathe

The Model A 9-inch South Bend Lathe is a precision tool capable of machining work to exacting tolerances. Designed and built for maximum efficiency of operation, it has many time saving features that reduce set-up time to a minimum. Practical attachments are available which greatly increase its usefulness.

Convenience and Ease of Operation are assured by the simple, practical design of these lathes. Well placed controls, large easy reading micrometer dials, lever reverse for threads and feeds, graduated compound rest, wrenchless bull gear lock, large handwheels, and other features save time and effort.

The Quick Change Gear Box provides 48 changes for cutting right- and left-hand screw threads from 4 to 224 per inch. Power longitudinal feeds .0015" to .0853" and power cross-feeds .0004" to .0252" are also obtained through the gear box.

The Power Feed Apron has a smooth operating worm drive, and friction clutch which permits engaging or disengaging the power cross-feed or the power longitudinal feed instantly. The threads of the lead screw are used only for cutting screw threads.

The Twelve-Speed Drive provides a series of twelve spindle speeds ranging from 41 to 1270 r.p.m. With this drive, a  $\frac{1}{2}$  h.p. motor is required.

The Six-Speed Drive provides a series of six spindle speeds ranging from 41 to 658 r.p.m. This drive is supplied in two styles, for mounting either a  $\frac{1}{4}$  h.p. motor or a  $\frac{1}{2}$  h.p. motor respectively.

Drive Equipment consists of: horizontal motor drive unit; motor pulley; V-belt; flat leather belt and lacing.

Regular Equipment consists of: power feed apron; gear box; graduated compound rest; face plate; tool post; two 60-degree centers; spindle sleeve; wrenches; installation plan; and book "How to Run a Lathe."

Model A 9-inch Precision Bench Lathes with  
Twelve-Speed Horizontal Motor Drive  
(Less Electrical Equipment and Bench)

Catalog Number	Bed Length	Between Centers	Weight Crated
644-Y	3 ft.	16 in.	355 lbs.
644-Z	3½ ft.	22 in.	380 lbs.
644-A	4 ft.	28 in.	405 lbs.
644-R	4½ ft.	34 in.	430 lbs.

Model A 9-inch Precision Bench Lathes with  
Six-Speed Horizontal Motor Drive  
(Less Electrical Equipment and Bench)

Bed Length	Between Centers	Weight Crated	For $\frac{1}{4}$ h.p. Motor		For $\frac{1}{2}$ h.p. Motor	
			Cat. No.		Cat. No.	
3 ft.	16 in.	340 lbs.	444-Y		2444-Y	
3½ ft.	22 in.	365 lbs.	444-Z		2444-Z	
4 ft.	28 in.	390 lbs.	444-A		2444-A	
4½ ft.	34 in.	415 lbs.	444-R		2444-R	



## Model B 9-inch *Precision* Bench Lathe

The 9-inch Model B South Bend Lathe is capable of the most exacting precision machine work. It is ideal for truing and undercutting armature commutators, making bushings, cutting screw threads, testing and straightening bent shafts, drilling, boring, reaming, polishing, etc.

Change Gears provide for cutting right- and left-hand screw threads from 4 to 160 per inch. Power longitudinal feeds .0021" to .0155" and power cross-feeds .001" to .0046" are also obtained through the change gears.

The Power Feed Apron has a smooth operating worm drive and friction clutch which permits engaging or disengaging the power cross-feed or the power longitudinal feed instantly. The threads of the lead screw are used only for cutting screw threads.

The Twelve-Speed Drive provides a series of twelve spindle speeds ranging from 41 to 1270 r.p.m. With this drive, a  $\frac{1}{2}$  h.p. motor is required.

The Six-Speed Drive provides a series of six spindle speeds ranging from 41 to 658 r.p.m. This drive is supplied in two styles, for mounting either a  $\frac{1}{4}$  h.p. motor or a  $\frac{1}{2}$  h.p. motor respectively.

Drive Equipment consists of: horizontal motor drive unit; motor pulley; V-belt; flat leather belt and lacing.

Regular Equipment included in price consists of: power feed apron; set of change gears; graduated compound rest; face plate; tool post; two 60-degree centers; spindle sleeve; wrenches; installation plan; and book "How to Run a Lathe."

### 9-inch Lathe Features

- |   |  |
|---|--|
| Heavy semi-steel bed with hand-scraped V-ways.            | Precision cut gears.                     |
| Heat-treated alloy steel superfinished headstock spindle. | Precision lead screw.                    |
| Superior workmanship.                                     | Ball thrust bearing.                     |
|   | Twin gear reverse for threads and feeds. |

Model B 9-inch Precision Bench Lathes  
with Twelve-Speed Horizontal Motor Drive  
(Less Electrical Equipment and Bench)

Catalog Number	Bed Length	Between Centers	Weight Crated
677-Y	3 ft.	16 in.	345 lbs.
677-Z	3½ ft.	22 in.	370 lbs.
677-A	4 ft.	28 in.	395 lbs.
677-R	4½ ft.	34 in.	420 lbs.

Model B 9-inch Precision Bench Lathes  
with Six-Speed Horizontal Motor Drive  
(Less Electrical Equipment and Bench)

Bed Length	Between Centers	Weight Crated	For $\frac{1}{4}$ h.p. Motor		For $\frac{1}{2}$ h.p. Motor	
			Cat. No.		Cat. No.	
3 ft.	16 in.	330 lbs.	477-Y		2477-Y	
3½ ft.	22 in.	355 lbs.	477-Z		2477-Z	
4 ft.	28 in.	380 lbs.	477-A		2477-A	
4½ ft.	34 in.	405 lbs.	477-R		2477-R	

## Motors and Controls

A few of the most popular motors and controls for 9-inch South Bend Lathes are listed below. Prices of motors and controls for current ratings not listed will be quoted on request.

Catalog Number	Description	Shipping Weight Pounds
CE3252	1/4 h.p. motor, 1 ph., 60 cy., 115 v. A.C. capacitor instant reversing. Equipped with 6-ft. extension cord and plug when ordered with lathe	30
CE3250D	1/4 h.p. motor, 3 ph., 60 cy., 220 v. A.C., instant reversing	25
CE3256B	1/8 h.p. motor, 1 ph., 60 cy., 115 v. A.C., split-phase, start-stop reversing	28
CE3228	1/2 h.p. motor, 1 ph., 60 cy., 115 v. A.C. capacitor instant reversing. Equipped with 6-ft. extension cord when ordered with lathe	52
CE3227D	1/2 h.p. motor, 3 ph., 60 cy., 220 v. A.C., instant reversing	45
CE789	Drum Reversing Control Switch for use with 1/4 h.p., 1/2 h.p., and 1/2 h.p. 115 v. motors for 9" Horizontal Motor Driven Bench Lathes only	3
CE790	Heavy Duty Drum Reversing Control Switch for 1/4 h.p. to 1/2 h.p., 115 v. or 220 v. motors, any type of drive	4

## Attachments and Accessories

Only part of the accessories and attachments for 9-inch South Bend Lathes are listed below. A catalog listing all accessories and attachments will be supplied on request.

Catalog Number	Description	Shipping Weight Pounds
<b>ATTACHMENTS</b>		
4306W	Handwheel Collet Attachment	5
8206W	Handlever Collet Attachment	10
809W	Steel Collets for round work, 1/8" to 1/2" in 64ths, each	8 3/32
1770W	Collet Rack	9
9W	Milling Attachment	13
428W	Taper Attachment	35
125W	Regular Steady Rest	10
34W	Regular Follower Rest	4
301BN	External Grinding Attachment with 1/4 h.p., 1 ph., 60 cy., 115 v., A.C. motor	55
968W	Micrometer Carriage Stop	2
1611W	Handlever Bed Turret	76
675N	Mica Undercutting Attachment	7
896W	Hand Rest for Wood Turning	6
2250N	Thread Cutting Stop	1 1/2
810W	Thread Dial Indicator, English	2
2030W	Handlever Double Tool Cross Slide	36
41ND	Square Turret for Double Tool Cross Slide	9
40NC	Square Turret for Compound Rest Cross Slide	13
2001B	Coolant Pump and Reservoir, Universal Type, not fitted, 1/4 h.p., 1 ph., 60 cy., 115 v. A.C. motor	110
1881A	Pneumatic Bar Feed Attachment, 1" capacity	38S
519W	Handlever Tailstock in lieu of regular tailstock	25

### ACCESSORIES

2105NR	Set of 6 Standard Lathe Dogs, 1/2" to 1 1/2" capacity	6
3900	Ball-bearing Live Center, 60° point	3
726NR	60° Center, hardened, No. 2 Morse taper	1
1889	60° Center, carbide-tipped, No. 2 Morse taper	1
727NR	Drill Pad, No. 2 Morse taper	3
728NR	Crotch Center, No. 2 Morse taper	2
731NR	Screw Center, No. 2 Morse taper	3
732NR	Spur Center, No. 2 Morse taper	2
733NR	Cup Center, No. 2 Morse taper	1

### CHUCKS AND TOOLS

4006W	6" 4-Jaw Independent Lathe Chuck fitted	13
6005W	5" 3-Jaw Universal Lathe Chuck fitted	12
6906W	6" 3-Jaw Universal Lathe Chuck, fitted	26
1201	Jacobs Drill Chuck, 0" to 1/2" capacity	2 1/2
2302	Arbor for above Drill Chuck No. 1201	1 1/2
1413N	10 in 1 Tool Holder	5
847S	Straight Shank Turning Tool with cutter bit	1
847R	Right-Hand Turning Tool with cutter bit	1
847L	Left-Hand Turning Tool with cutter bit	1
833S	Straight Shank Cutting-off Tool with blade	1
833R	Right-Hand Cutting-off Tool with blade	1
423	Boring Tool, Style "B," with Boring Bar	2
820	Knurling Tool with medium diamond knurls	2
845	Threading Tool with 60° cutter blades	2



Coolant equipment and collet attachment not included in price

## 930Z Precision Turret Lathe

The No. 930Z South Bend Turret Lathe is practical for manufacturing small precision parts. It meets the demand for fast, efficient production, yet it is easily adaptable to many classes of work. It has the stamina for exacting, close-tolerance operations, ample power for smooth performance, and the rigidity for producing a fine finish. Designed for the efficient production of duplicate parts, this lathe is especially suitable for second operation work.

The Handlever Bed Turret has automatic indexing and individual stops for each of the six turret faces. Turret head may be back-indexed or spun to skip tool positions.

The Double Tool Cross Slide has front and rear tool blocks for turning, forming, facing, and cutting-off operations. Adjustable stops limit the movement of the cross-feed in either direction, in or out. The handlever can be removed and the cross-feed screw attached, permitting use of all power carriage feeds with the double tool cross slide.

The Compound Rest Cross Slide, supplied in addition to the double tool cross slide, has power cross-feed and power longitudinal feed. Compound rest swivel is graduated 180° and may be set at any angle for machining bevels and short tapers.

The Underneath Motor Drive and the back-geared headstock provide a wide range of spindle speeds. Direct belt drive to the spindle for high speeds assures smooth operation on small diameter work. Slow speeds for heavy cuts on large diameter work are driven through the back gears.

### Turret Lathe Specifications

Hole through spindle	9 1/2"
Swing over bed and saddle wings	1 1/2" - 8"
Spindle nose diameter and threads per inch	1 1/2" - 8
Maximum capacity through collet chuck	1 1/2"
Maximum capacity through universal lathe chuck	1 1/2"
Spindle speeds, twelve, approximately	41 to 1270 r.p.m.
Diameter of holes in turret face*	1 1/2"
Center of turret hole to top of turret slide	1 1/2"
Effective feed of turret slide	4"
Distance between opposite flats	4 1/2"
Thread cutting range	4 to 224 per inch
Swing over double tool cross slide	3 1/2"
Cross travel of double tool cross slide	3 1/2"
Maximum size cutter bit for tool block	1 1/2"
Size of tool holder shank for tool post	1 1/2"
Size cutter bits tool holder takes	1 1/2"
Standard size of motor required	1/2 h.p.

Catalog Number 930Z. Underneath Motor Driven Quick Change Gear Turret Lathe with 3 1/2 ft. bed, welded steel column base, built-in oil pan, underneath motor drive unit, power feed universal carriage, handlever bed turret, double tool cross slide, compound rest cross slide, and coolant return assembly. Approximate shipping weight crated, 720 lbs.

Note: Tailstock, centers, spindle sleeve, face plates, draw-in collet chuck, lathe chuck, splash pan, thread cutting stop, coolant equipment, and electrical equipment for driving lathe are not included in the price of the lathe.



## Model C 9-inch *Precision Bench Lathe*

The Model C 9-inch South Bend Lathe is built with the same care and precision as our more expensive models, yet it is very reasonable in price. The workmanship and materials entering into its construction are the best obtainable. With one of these lathes in your shop, you will be equipped to handle the most exacting machine operations.

The Back-Geared Headstock has wrenchless bull gear lock and lever reverse for threads and feeds. The spindle is made of heat-treated steel with hardened, ground, and super-finished journal bearing surface. The lathe bed has three hand-scraped V-ways to assure permanent precision alignment of the headstock, tailstock, and carriage.

Change Gears provide for cutting right- and left-hand screw threads from 4 to 160 per inch. Power longitudinal feeds are obtained by engaging the half-nuts with the lead screw. The feeds range from .0021" to .0156" depending on the arrangement of the change gears. The cross-feed is operated by hand.

The Twelve-Speed Drive provides a series of twelve spindle speeds ranging from 41 to 1270 r.p.m. With this drive, a 1/2 h.p. motor is required.

The Six-Speed Drive provides a series of six spindle speeds ranging from 41 to 658 r.p.m. This drive is supplied in two styles, for mounting either a 1/4 h.p. motor or a 1/2 h.p. motor respectively.

Drive Equipment consists of: horizontal motor drive unit; motor pulley; V-belt; flat leather belt and lacing.

Regular Equipment consists of: plain apron; change gears; graduated compound rest; face plate; tool post; two-60-degree centers; spindle sleeve; wrenches; installation plan; and book "How to Run a Lathe."

### 9-inch Lathe Specifications

Centers, Morse taper . . . . . No. 2	Swing over saddle wings . . . . . 9 1/4"
Collet capacity, maximum . . . . . 1 1/2"	Swing over chip guard . . . . . 5 1/2"
Headstock spindle hole . . . . . 3/4"	Tailstock top set over . . . . . 3/8"
Lead screw 29° Acme Thd. . . . . 3/4"-8	Tool holder cutter bit . . . . . 1/4" sq.
Spindle nose threads . . . . . 1 1/2"-8	Tool holder shank . . . . . 3/8" x 1 1/2"

### Model C 9-inch Precision Bench Lathes with Twelve-Speed Horizontal Motor Drive (Less Electrical Equipment and Bench)

Catalog Number	Bed Length	Between Centers	Weight Crated
615-YC	3 ft.	16 in.	335 lbs.
615-ZC	3 1/2 ft.	22 in.	360 lbs.
615-AC	4 ft.	28 in.	385 lbs.
615-RC	4 1/2 ft.	34 in.	410 lbs.

### Model C 9-inch Precision Bench Lathes with Six-Speed Horizontal Motor Drive (Less Electrical Equipment and Bench)

Bed Length	Between Centers	Weight Crated	For 1/4 h.p. Motor		For 1/2 h.p. Motor	
			Cat. No.		Cat. No.	
3 ft.	16 in.	320 lbs.	415-YC		2415-Y	
3 1/2 ft.	22 in.	345 lbs.	415-ZC		2415-Z	
4 ft.	28 in.	370 lbs.	415-AC		2415-A	
4 1/2 ft.	34 in.	395 lbs.	415-RC		2415-R	



## V-Belt Drive 9-inch *Precision Bench Lathes*

The V-Belt Drive 9-inch South Bend Lathe has 4 step cone pulleys for V-belt drive, otherwise it is the same as the Model A, Model B, and Model C 9-inch Lathes with flat belt drive. This drive is recommended to those who prefer a V-belt drive to the smoother operating and more easily replaced flat belt drive. The headstock and countershaft of this lathe must be disassembled to replace the cone pulley V-belt.

The Sixteen-Speed Drive provides a series of sixteen spindle speeds ranging from 46 to 1176 r.p.m. With this drive, a 1/2 h.p. motor is required.

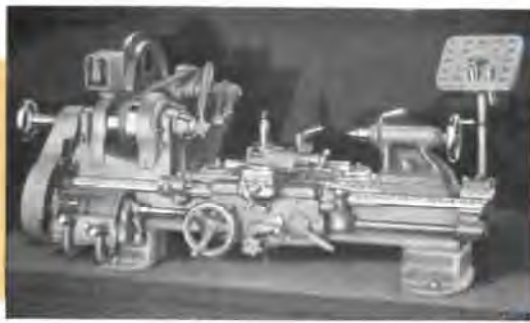
The Eight-Speed Drive provides a series of eight spindle speeds ranging from 46 to 609 r.p.m. This drive is supplied in two styles, for mounting either a 1/4 h.p. motor or a 1/2 h.p. motor respectively.

Drive Equipment consists of: horizontal motor drive unit; motor pulley; and V-belts.

Regular Equipment is the same as for corresponding models with flat belt drive.

### V-Belt Drive 9-inch Precision Bench Lathes (Less Electrical Equipment and Bench)

Type Lathe	Catalog Number	Bed Length	Between Centers	Weight Crated
With Sixteen-Speed Drive for 1/2 h.p. Motor				
Model A	744-Y	3 ft.	16 in.	355 lbs.
	744-Z	3 1/2 ft.	22 in.	380 lbs.
	744-A	4 ft.	28 in.	405 lbs.
	744-R	4 1/2 ft.	34 in.	430 lbs.
Model B	777-Y	3 ft.	16 in.	345 lbs.
	777-Z	3 1/2 ft.	22 in.	370 lbs.
	777-A	4 ft.	28 in.	395 lbs.
	777-R	4 1/2 ft.	34 in.	420 lbs.
Model C	715-YC	3 ft.	16 in.	335 lbs.
	715-ZC	3 1/2 ft.	22 in.	360 lbs.
	715-AC	4 ft.	28 in.	385 lbs.
	715-RC	4 1/2 ft.	34 in.	410 lbs.
With Eight-Speed Drive for 1/2 h.p. Motor				
Model A	2544-Y	3 ft.	16 in.	340 lbs.
	2544-Z	3 1/2 ft.	22 in.	365 lbs.
	2544-A	4 ft.	28 in.	390 lbs.
	2544-R	4 1/2 ft.	34 in.	415 lbs.
Model B	2577-Y	3 ft.	16 in.	330 lbs.
	2577-Z	3 1/2 ft.	22 in.	355 lbs.
	2577-A	4 ft.	28 in.	380 lbs.
	2577-R	4 1/2 ft.	34 in.	405 lbs.
Model C	2515-Y	3 ft.	16 in.	320 lbs.
	2515-Z	3 1/2 ft.	22 in.	345 lbs.
	2515-A	4 ft.	28 in.	370 lbs.
	2515-R	4 1/2 ft.	34 in.	395 lbs.
With Eight-Speed Drive for 1/4 h.p. Motor				
Model A	544-Y	3 ft.	16 in.	340 lbs.
	544-Z	3 1/2 ft.	22 in.	365 lbs.
	544-A	4 ft.	28 in.	390 lbs.
	544-R	4 1/2 ft.	34 in.	415 lbs.
Model B	577-Y	3 ft.	16 in.	330 lbs.
	577-Z	3 1/2 ft.	22 in.	355 lbs.
	577-A	4 ft.	28 in.	380 lbs.
	577-R	4 1/2 ft.	34 in.	405 lbs.
Model C	515-YC	3 ft.	16 in.	320 lbs.
	515-ZC	3 1/2 ft.	22 in.	345 lbs.
	515-AC	4 ft.	28 in.	370 lbs.
	515-RC	4 1/2 ft.	34 in.	395 lbs.



### Toolroom 9-inch *Precision* Bench Lathes

The 9-inch Toolroom Bench Lathe with Twelve-Speed horizontal motor drive is illustrated above. This lathe has the power, speed and accuracy for making small precision parts, bushings, bearings, gauges, taps, dies, and other small toolroom jobs. It is the same as the Model A Lathe shown on pages 2 and 3, except that in addition to all regular lathe equipment it has the following toolroom attachments: precision lead screw; handwheel type draw-in collet chuck attachment (without collets); collet rack; taper attachment; thread dial indicator; thread cutting stop; large face plate; and micrometer carriage stop.

Toolroom Bench Lathes with  
Twelve-Speed Horizontal Motor Drive  
(Less Electrical Equipment and Bench)

Catalog Number	Bed Length	Between Centers	Weight Crated
8644-Y	3 ft.	16 in.	400 lbs.
8644-Z	3½ ft.	22 in.	425 lbs.
8644-A	4 ft.	28 in.	450 lbs.



### 9-inch Underneath Motor Driven *Toolroom Precision* Lathes

The 9-inch Toolroom Lathe with underneath motor drive is the same as the Toolroom Bench Lathe illustrated and described above, except that it has the underneath motor drive mounted in the metal column base as shown. The toolroom attachments and regular equipment included in the prices of these lathes are the same as specified for the Toolroom Bench Lathes. The metal column base on which the lathe is mounted is available without drawers as illustrated, or with three drawers as shown in illustration at top of column at right.

9-inch Toolroom Lathes  
With Underneath Motor Drive  
(Less Electrical Equipment)

Bed Length	Between Centers	Weight Crated	With Drawers		Less Drawers	
			Cat No.		Cat No.	
3½ ft.	22 in.	810 lbs.	8344-ZD		8344-ZN	



### 9-inch Underneath Motor Driven *Precision* Lathes

The 9-inch Model A South Bend Lathe with underneath motor drive is illustrated above. The 9-inch Model B and C Lathes are also made with this drive. These lathes are the same as corresponding models of 9-inch Bench Lathes, except for the underneath motor drive and the necessary alterations in the headstock. See pages 3 and 4 for specifications.

Capable of machining work to the exacting tolerances demanded in modern industry, this lathe is recommended for precision work in the electrical service shop, instrument shop, general repair shop, machine shop, laboratory, and shops of all kinds engaged in the machining of steel, cast iron, bronze, tool steel, fibre, plastics, and similar materials.

Convenience and Ease of Operation are assured by the simple, practical design of these lathes. Well placed controls, large easy reading micrometer dials, lever reverse for threads and feeds, graduated compound rest, wrenchless bull gear lock, large handwheels, and other features save time and effort.

The Motor Drive Unit, enclosed in the cabinet underneath the lathe headstock, provides twelve spindle speeds ranging from 41 to 1270 r.p.m. The cone pulley belt tension may be released and the hinged cone pulley cover on the headstock may be raised for shifting the cone pulley belt. Any desired belt tension can be obtained by adjusting a turnbuckle located inside the cabinet.

Regular Equipment and drive equipment included in price of lathe consist of: metal column base with chip pan; underneath belt motor drive unit; motor pulley with ¾" hole; V-belt; flat leather belt and lacing; power feed apron; graduated compound rest; face plate; tool post; two 60-degree centers; spindle sleeve; wrenches; quick change gear box or set of change gears; installation plan; and book "How to Run a Lathe." A ½ h.p. motor is required.

The Metal Column Base on which the lathe is mounted is constructed throughout of heavy gauge welded steel and finished in gray crackle enamel. It is available with three drawers as illustrated, or without the drawers (see illustration of Toolroom Lathe, at left). Each drawer is 10¾" x 5½" x 14" inside and is fitted with lock and key. A built-in chip pan with 5/8" bead around the edge forms the top of the metal column base.

9-inch Underneath Motor Driven Lathes  
With Metal Column Base  
(Less Electrical Equipment)

Type Lathe	Between Centers	Weight Crated	With Drawers		Less Drawers	
			Cat. No.		Cat. No.	
Model A	22 in.	600 lbs.	344-ZD		344-ZN	
Model B	22 in.	590 lbs.	377-ZD		377-ZN	
Model C	22 in.	580 lbs.	315-ZD		315-ZN	